

WAURISA 2010 GIS Conference



OT ST	Analysis of Bike Lane Access in Seattle	Vendor Exh
o 1:20 pm— Room 315		
Panel: Spatial Data Quality		
ve lytic	<p>Spatial Data Quality: Dealing with the Devil in the Details</p> <p style="text-align: center;"><u>Panel Members:</u></p> <ul style="list-style-type: none"> • Karl Johansen, Port Madison GIS • Doug Smith, CP, PE, RPP, David C. Smith and Associates, Inc. • Michael Kulish, PLS, GISP, King County Dept. of Transportation • Gavin Schrock, PLS, Seattle Public Utilities 	
mi- liff of		



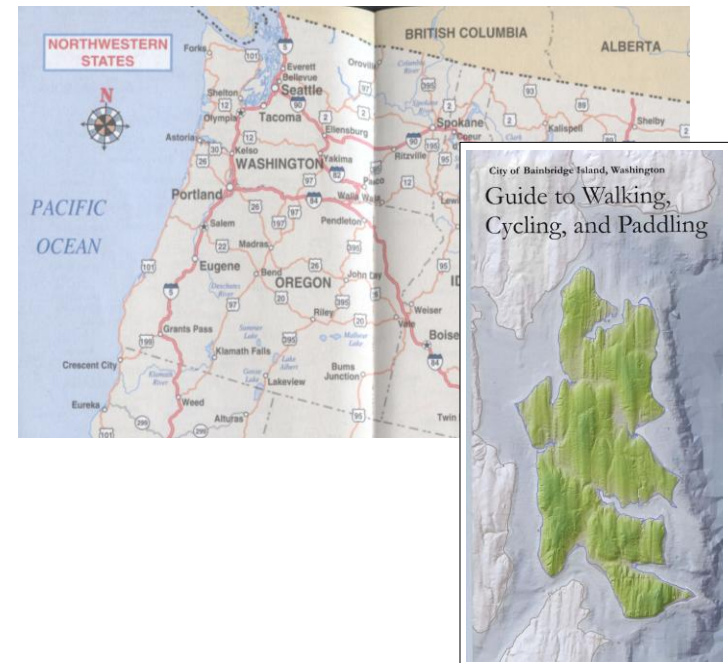
WAURISA 2010 GIS Conference

- Spatial Data Quality – a complex and challenging subject
- How do we identify data quality issues?
- When do we decide it is “good enough”?
- What do we do about it?



WAURISA 2010 GIS Conference

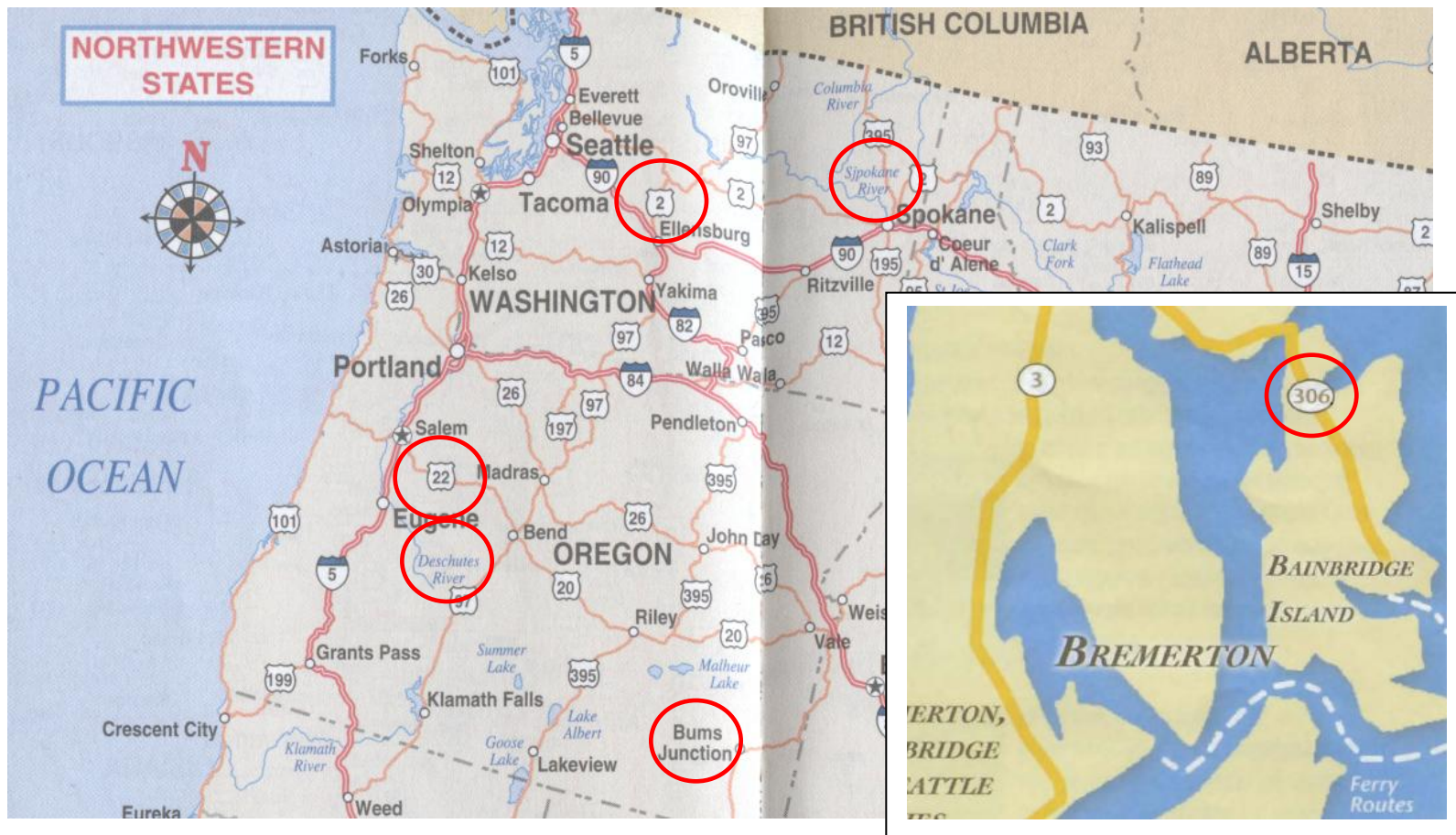
Identifying Spatial data Quality Issues: the “IMBY” concept





WAURISA 2010 GIS Conference

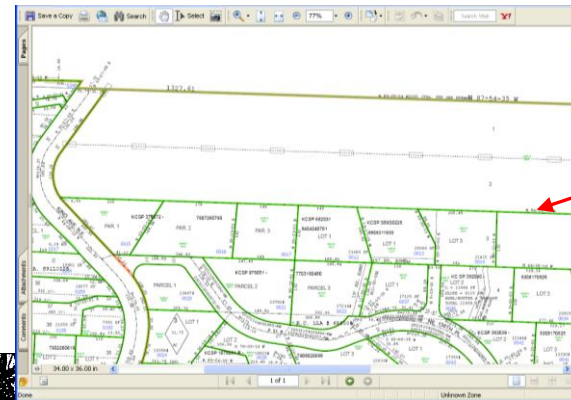
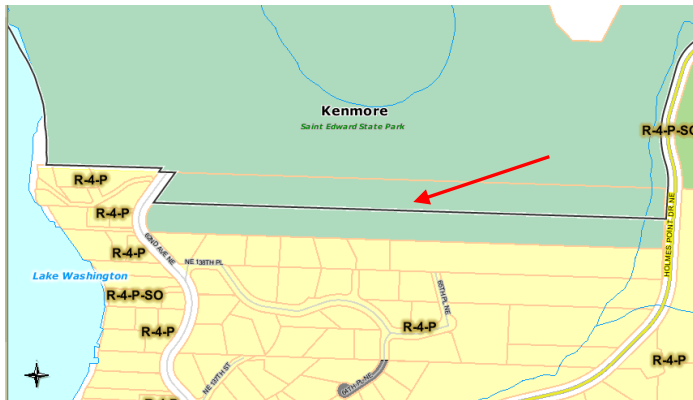
Identifying Spatial data Quality Issues: the “IMBY” concept





WAURISA 2010 GIS Conference

Identifying Spatial data Quality Issues: the sources



Thence southerly along the East margin of 62nd Avenue Northeast, to the point of intersection with the North line of King County Short Plat Number 376072, recorded under Recording Number 7607290790, records of King County, Washington;

Thence easterly along the North line of said King County Short Plat and the North line of King County Short Plat 682031, recorded under Recording Number 8404240701, and King County Short Plat S89S0226, recorded under Recording Number 8908311935, all in records of King County, Washington, to the West margin of Holmes Point Drive Northeast;



Thence northerly and easterly along said margin to the West margin of Juanita Drive Northeast;

Thence northerly along the West margin of said Juanita Drive Northeast to the point of





WAURISA 2010 GIS Conference

Identifying Spatial data Quality Issues: the sources

