

If it is Free, is it Good?

The Pierce County Perspective

Jared Erickson GISP
Pierce County IT/GIS
jericks@co.pierce.wa.us

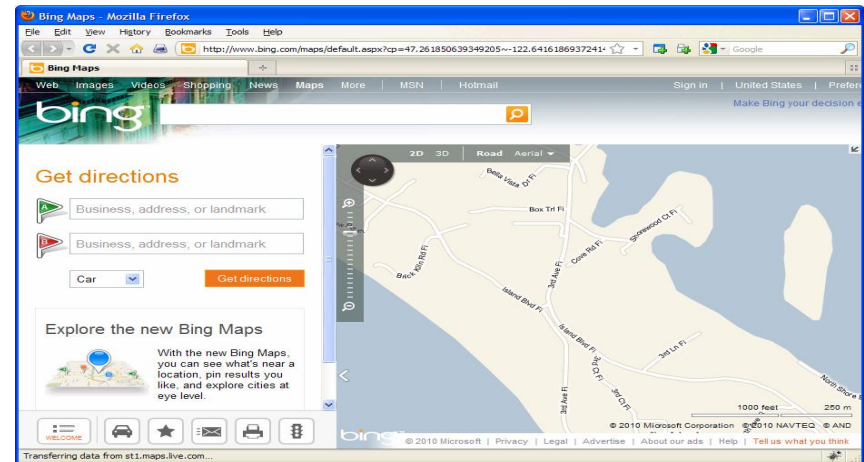
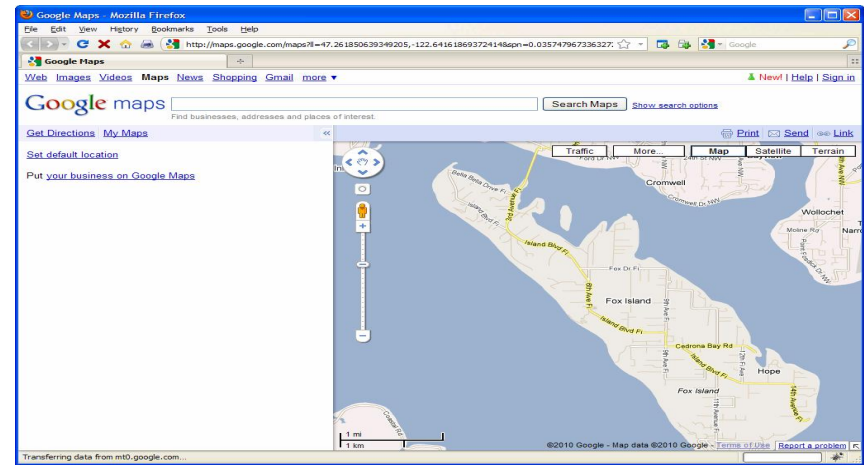
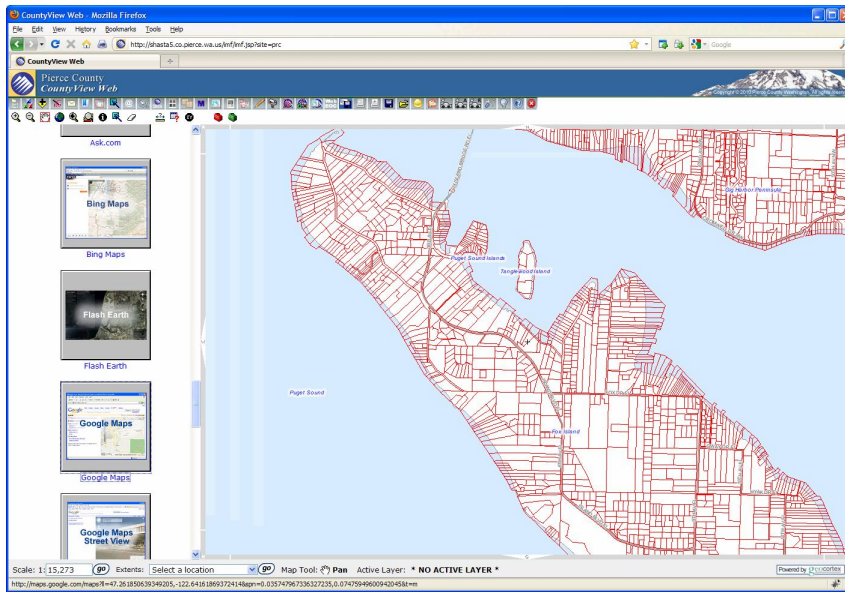
Introduction

- Free Apps
- Free Data
- Free Software

Free Apps

- Google Earth, Google Maps, Bing
 - Open @
 - Internet and Intranet usage
 - Taking Control of your Basemap

Open @ Geographical Linking



Internet and Intranet usage

- Pierce County GIS is an Enterprise System
- We want 1 set of base maps
 - Intranet
 - Internet
- Licenses restrict Free use to publicly available web sites

Taking Control of your Basemap

- ❑ No control of colors, fonts, projection
- ❑ “Google Maps fatigue”
- ❑ YAGMM (Yet Another Google Maps Mashup)

<http://www.alistapart.com/articles/takecontrolofyourmaps>

Free Software

- ❑ ESRI software is wonderful but it only goes so far
- ❑ Combined with Open Source software you can do more.
- ❑ PostGIS
- ❑ OpenLayers
- ❑ GeoTools
- ❑ Java Topology Suite

Neighborhood Crime

Pierce County Sheriff's Department
Neighborhood Crime

Search By: [Address](#) [Neighborhood](#) [Community](#) [City](#) [Action Team](#) [Map](#) [Feedback](#)

Crime around your selected map point

Click city name to view report: Crime Types:

- Bonney Lake
- Edgewood
- Gig Harbor
- Puyallup
- South Prairie
- Tacoma
- University Place
- Other Cities
- Pierce County

- Arson
- Assault
- Burglary
- Drug
- Homicide
- Motor Vehicle Theft
- Robbery
- Prostitution
- Theft
- Theft - Business
- Vandalism
- Other

Highways
 Arterials
 Streets

January 2010 to February 2010 [Center on Map](#)

Year-To-Date Comparison [Last 12 Months](#) [One-Month Summary](#)

Year-to-date (through February 2010) there were **24 incidents** within a **half-mile radius** around your selected point.

Kidnap/Child Lure

	February 2009	February 2010	Year-To-Date (through Feb 2009)	Year-To-Date (through Feb 2010)	Year-To-Date Percent Change
Child Luring	0	0	0	0	0%
Kidnapping (restrain or abduct)	0	0	0	0	0%
Kidnap/Child Lure Total:	0	0	0	0	0%

Violent Crimes

	February 2009	February 2010	Year-To-Date (through Feb 2009)	Year-To-Date (through Feb 2010)	Year-To-Date Percent Change

Done

Fraud or Forgery
Fraud - Identity Theft
 Case Number: 100560698
 Date: 01/25/2010

1158397.47946, 707127.62500

QuickView

Utilities/Sewer - QuickView - Mozilla Firefox

File Edit View History Bookmarks Tools Help

http://cascade/website/quickview_ut/viewer.htm?StartRight=1175514.2174568386&StartBottom=638123.064525378&StartLeft=1187850.24660909138&gdal

Utilities/Sewer - QuickView

Utilities/Sewer - QuickView

General Information - Parcel 4015310210 e-PIP

City Limits	Unincorporated County
Current Zoning	Moderate Density Single Family
Potholes	Firmemadow
Reimbursement Agreement Areas	HANSEN ESTATES
Service Response System	N/A
Sewer Service Areas	Pierce County Sewer Service Area
Ulids	N/A
Urban Growth Area	Within CUGA not in any city UGA

Proximities

CWI Wetland	0 ft
Pump Stations	2595.1 ft
Sewer Lines	15.6 ft

Nearest Road

Road Name	187TH STCTE
-----------	-------------

No County Road Information Available

SEARCH
DETAILS
[Icons: Home, Print, Full Screen, etc.]
Enlarge/ Shrink Map
Help/ Tutorial

DISCLAIMER

Notice: The boundaries are approximate and are intended only to provide an indication of said areas. Additional areas that have not been mapped may be present. This is not a survey. Parcel boundaries are approximate and not based on a survey. Orthophotos and other data may not align. We assume no liability for variations ascertained by actual survey. For assessor's use only.

View Permit Info

Identify All Features

Transferring data from cascade...

Pierce County GIS

The map features are approximate and are intended only to provide an indication of field features. Additional errors that have not been measured may be present. This is not a survey. The County makes no warranty of fitness for a particular purpose. ALL DATA IS EXPRESSLY PROVIDED "AS IS" AND "WITH ALL FAULTS".