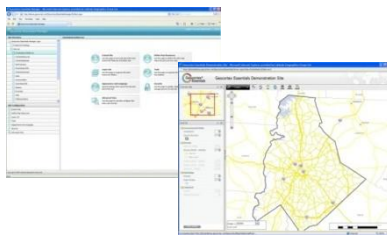


# Configuring Flex based applications with ArcGIS Server

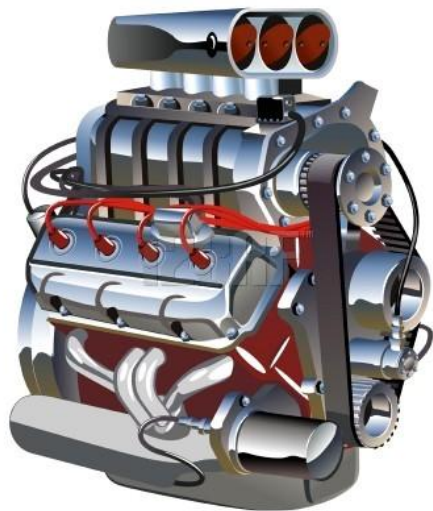
**Darin Herle**  
**Latitude Geographics**  
**April 20, 2010**

# Geocortex<sup>®</sup> Essentials for ArcGIS Server



# What is ArcGIS Server? A metaphor...

# What is ArcGIS Server?



+



## *“The Engine”*

- Server platform
- Exports services
  - Mapservice, Query, Geocode, etc.

## *“The Parts”*

- Template viewers
- APIs
- ArcScripts
- Resource Center, Forums

# What is Geocortex Essentials?



## ***“The Car”***

- **Powerful, COTS viewer architecture**
- **Highly *configurable* (and extensible, via developer APIs, as required)**

# What is Geocortex Essentials?

## Framework Architecture

- XML based configuration of sites and applications

## A set of Developer APIs

- REST
- Flex
- Silverlight
- Javascript
- Web ADF
- .NET

## Resources for developers and administrators

- Resource Centre:  
<http://resources.geocortex.com>
- Support Portal:  
<http://support.geocortex.com>
- Administrator guide and compiled help (.CHM) files

## Workflow\*

- Workflow units
- Designer tool
- Wizards

## Template Viewers

- Web ADF
- Flex

## Configuration and design tools

- Web ADF administration tool
- REST administration tool\*
- Report Designer
- Workflow Designer\*

\*Geocortex Essentials 3.0, Q2 2010

A light blue world map is visible in the background, showing the continents of North America, South America, Europe, and Africa. The map is centered and serves as a backdrop for the text.

# Demonstration

# Geocortex<sup>®</sup> Essentials for ArcGIS Server

[dherle@latitudegeo.com](mailto:dherle@latitudegeo.com)

[www.geocortex.com](http://www.geocortex.com)

